

FLP-25-T1-V/3+1

Ordering number 8595090553045

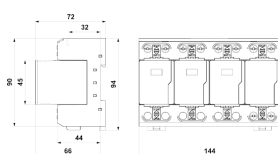
SPD type 1 - Lightning Current Arrester

pluggable module, visual fault signalling, module locking

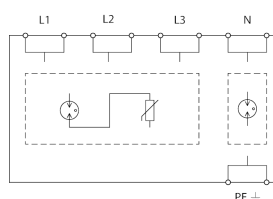
combination of three-pole high performance lightning current arrester and encapsulated efficiency spark gap, connected in the 3+1 mode, leakage current-free, installation at the boundary of zones LPZ 0 and LPZ 1 or higher, mainly to main distribution boards, for protection against impact of direct or indirect lightning strikes in wide range of applications - houses, office and industrial buildings, coordination with SPD type 2 (SLP-275 V) even without surge separating inductors



Dimension drawing



Basic circuit diagram



Technical specifications

Type of SPD		T1
Nominal voltage	U_n	230 V AC
Maximum operating voltage L-N	U_c	260,00 V AC
Maximum operating voltage N-PE	U_c	255,00 V AC
Nominal load current for "V" connection	I_L	125 A
Lightning impulse current (10/350 μs) L-N	I_{imp}	25,00 kA
Lightning impulse current (10/350 μs) N-PE	I_{imp}	100,00 kA
Voltage protection level mode L-N	U_p	1,50 kV
Voltage protection level mode N-PE	U_p	1,50 kV
Voltage protection level mode L-PE	U_p	2,20 kV
Ability to independently switch off the following current N-PE	I_{fi}	0,1 kA
Short-circuit current rating	I_{SCCR}	50,0 kA
Maximum overcurrent protection		250 A gL/gG
Maximum overcurrent protection for "V" connection		125 A gL/gG
Response time L-N	t_s	100 ns
Response time N-PE	t_s	100 ns
TOV 5 s L-N		335 V
TOV characteristic (TOV 5 s)		withstand
TOV 200 ms N-PE		1 200 V
TOV characteristic (TOV 200 ms)		withstand
Cross-section of connected conductors solid (min)		2,50 mm ²
Cross-section of connected conductors solid (max)		50,00 mm ²
Cross-section of connected conductors stranded (min)		2,50 mm ²
Cross-section of connected conductors stranded (max)		35,00 mm ²
Fault indication L-N		red indication field
Fault indication N-PE		no
Degree of protection		IP 20
Range of ambient temperatures - min		-40 °C
Range of ambient temperatures - max		80 °C
Mounting		DIN rail 35 mm
According to standard		EN 61643-11:2012, IEC 61643-11:2011
Plug module		FLP-25-T1-V/0
ETIM Class		EC000381