

PSSu BS 1/8 C

312651



Technical details

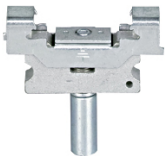
Product version:	1.0
Approvals:	CE;cULus Listed;TÜV;BG
Terminal type:	Cage clamp terminal
Width dimension:	12.6 mm
Height dimension:	129.0 mm
Gross weight:	45 g
Net weight:	34 g

Related Products



312900

PSSu A ET (10 pcs.)



312901

PSSu A ETM (2 pcs.)



312902

PSSu A EC



312949

PSSu A ET PE (10 pcs.)



312950

PSSu A ME0 (10x6 pcs.)



312951

PSSu A ME1 (10x6 pcs.)



312952

PSSu A ME2 (10x6 pcs.)



312953

PSSu A ME3 (10x6 pcs.)



312954

PSSu A ME4 (10x6 pcs.)



312955

PSSu A ME5 (10x6 pcs.)