

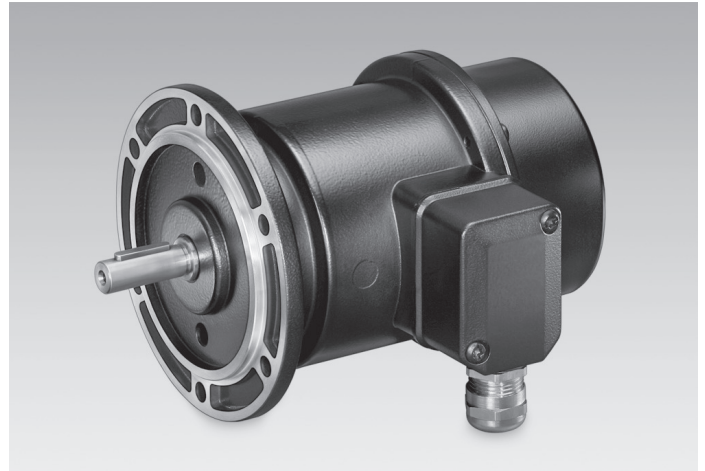
TDP 0,2, TDPZ 0,2

Solid shaft with EURO flange B10 or housing foot B3

With own bearings

Overview

- Low response time
- Open circuit voltage 10...150 mV per rpm
- Redundant output (TDPZ)
- EURO flange B10 or housing foot B3
- Very high resistance to shock
- High signal quality due to patented LongLife technology
- Recognition of sense of rotation possible via control



Technical data

Technical data - electrical ratings

Reversal tolerance	≤0,1 %
Linearity tolerance	≤0,15 %
Temperature coefficient	± 0,05 %/K (open-circuit)
Isolation class	B
Calibration tolerance	±1 %
Climatic test	Humid heat, constant (IEC 60068-2-3, Ca)
Performance	TDP: 12 W (speed ≥3000 rpm) TDPZ: 2x 3 W (speed ≥3000 rpm)
Armature-circuit time-constant	<75 μs (TDP) <40 μs (TDPZ)
Open-circuit voltage	TDP: 10...150 mV per rpm TDPZ: 20...100 mV per rpm
Interference immunity	EN 61000-6-2
Emitted interference	EN 61000-6-3
Approval	CE

Technical data - mechanical design

Size (flange)	ø115 mm
Shaft type	ø11 mm solid shaft ø7 mm solid shaft (optional) ø14 mm solid shaft (optional)

Optional

- Marine air protected/tropicalized
- Second shaft end (B14)

Technical data - mechanical design

Flange	EURO flange B10 Housing foot B3
Protection DIN EN 60529	IP 55 IP 56 (option)
Operating speed	≤10000 rpm
Torque	1,5 Ncm
Rotor moment of inertia	1,1 kgcm ² (TDP) 1,2 kgcm ² (TDPZ)
Admitted shaft load	≤60 N axial ≤80 N radial
Material	Housing: aluminium die-cast Shaft: stainless steel
Operating temperature	-30...+130 °C
Resistance	IEC 60068-2-6 Vibration 10 g, 10...2000 Hz IEC 60068-2-27 Shock 300 g, 1 ms
Weight approx.	2,4 kg (TDP) 2,9 kg (TDPZ)
Connection	Terminal box

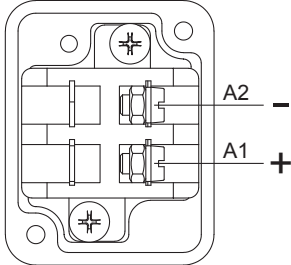
TDP 0,2, TDPZ 0,2

Solid shaft with EURO flange B10 or housing foot B3
With own bearings

Terminal assignment

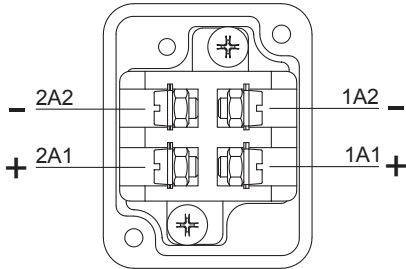
View A (see dimension)

Connecting terminal tachogenerator TDP
Polarity for positive rotating direction



View A (see dimension)

Connecting terminal twin tachogenerator TDPZ
Polarity for positive rotating direction



TDP 0,2, TDPZ 0,2

Solid shaft with EURO flange B10 or housing foot B3

With own bearings

Ordering reference

	TDP #	#####	#####
Product	TDP		
Tachogenerator			
Design			
Tachogenerator			
Twin tachogenerator	Z		
Open-circuit voltage			
10 mV per rpm (not available for TDPZ)		0,2LT-6	
20 mV per rpm		0,2LT-7	
30 mV per rpm		0,2LT-10	
40 mV per rpm		0,2LT-5	
60 mV per rpm		0,2LT-4	
100 mV per rpm		0,2LT-3	
150 mV per rpm (not available for TDPZ)		0,2LT-1	
Mounting type			
EURO flange B10			B10
Housing foot B3			B3

Data according to type

Type	Open-circuit voltage U_0 [mV/rpm]	Minimum load required depending on speed range [rpm]			Maximum operating speed n_{max} [rpm]	Armature resistance R_A (20°C) [Ω]	Armature inductance L_A [mH]
		0-3000 R_L [kΩ]	0-6000 R_L [kΩ]	0- n_{max} R_L [kΩ]			
TDP0,2 LT-6	10	≥0.1	≥0.3	≥0.9	10000	3	6
TDP0,2 LT-7	20	≥0.3	≥1.2	≥3.3	10000	11	23
TDP0,2 LT-10	30	≥0.7	≥2.7	≥7.5	10000	26	50
TDP0,2 LT-5	40	≥1.2	≥5	≥13.5	10000	47	90
TDP0,2 LT-4	60	≥2.7	≥11	≥30	10000	99	200
TDP0,2 LT-3	100	≥7.5	≥30	≥30	6000	271	550
TDP0,2 LT-1	150	≥16	---	≥30	4000	630	1260

Twin tachogenerator with redundant output
(The data refer to each of the two tachogenerator outputs)

TDPZ0,2 LT-7	20	≥1.2	≥4.8	≥14	10000	19	45
TDPZ0,2 LT-10	30	≥2.7	≥11	≥30	10000	42	103
TDPZ0,2 LT-5	40	≥4.8	≥20	≥54	10000	70	170
TDPZ0,2 LT-4	60	≥11	≥44	≥120	10000	160	390
TDPZ0,2 LT-3	100	≥30	≥120	---	6000	445	1080

Superimposed ripple (for $\tau_{RC} = 0.7$ ms): ≤0.5% (peak-peak) ≤0.2% (rms)

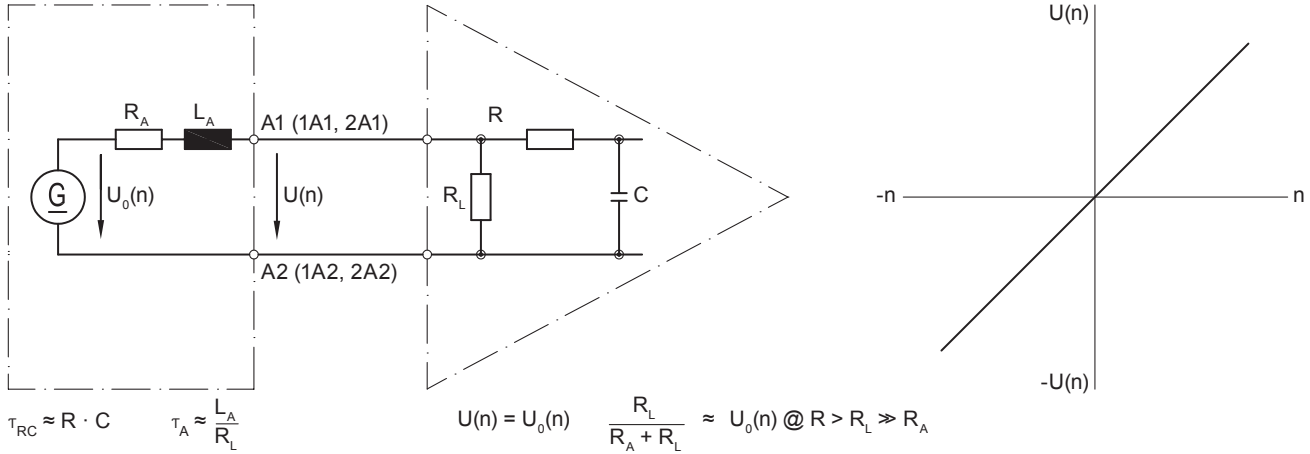
TDP 0,2, TDPZ 0,2

Solid shaft with EURO flange B10 or housing foot B3

With own bearings

Replacement switching diagram

Tachogenerator



Polarity for positive rotating direction (see dimension) / A1 (1A1, 2A1): + (VDE) / A2 (1A2, 2A2): - (VDE)

Accessories

Mounting accessories

- Spring disk coupling K 35 (shaft $\varnothing 6 \dots 12$ mm)
- Spring disk coupling K 50 (shaft $\varnothing 11 \dots 16$ mm)
- Spring disk coupling K 60 (shaft $\varnothing 11 \dots 22$ mm)

Spare parts

- Carbon brushes (on request)