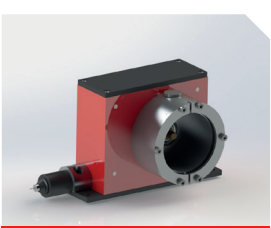


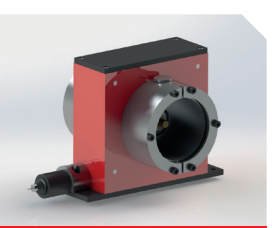


DRAW WIRE SYSTEMS

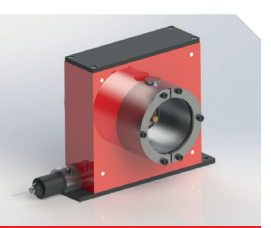
LINEAR MEASUREMENT



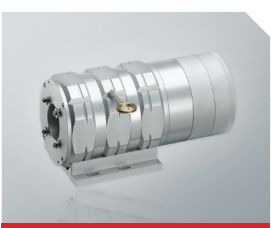
SERIE EM4 / EM4 FX
 90.1404 / 90.1404.FX
 ≤ 4.000 mm
 ≤ 1 m/s
 200 mm ±0,06 / turn



SERIE EM8 / EM8 FX
 90.1808 / 90.1808.FX
 ≤ 8.000 mm
 ≤ 0,75 m/s
 250 mm ±0,06 / turn



SERIE EM10 / EM10 FX
 90.1810 / 90.1810.FX
 ≤ 10.000 mm
 ≤ 0,75 m/s
 300 mm ±0,06 / turn



SERIE XT12
 XT12-10000 / XT12-15000
 ≤ 15.000 mm
 ≤ 10 m/s
 300 mm / turn



SERIE XT18
 XT18-20000 / XT18-50000
 ≤ 50.000 mm
 ≤ 10 m/s
 500 mm / turn



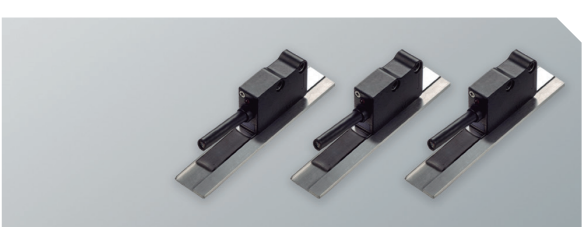
Draw wire systems allow to operate a rotary sensor of any type, for the measurement of linear distances:

- + Incremental Optical Encoder
- + Multiturn Absolute Optical Encoder
- + Multiturn Absolute Magnetic Encoder
- + Potentiometer



MAGNETIC SENSOR SYSTEMS

LINEAR MEASUREMENT



SERIE	MSL	MSM	MSH
Accuracy	Incremental ± 50 µm	Incremental ± 8 µm	Incremental ± 6 µm
Pole pitch	5+5	2+2	1+1
Resolution*	100 µm	10 µm	5 µm
Protection	IP67	IP67	IP67



SERIE VIMS	
Accuracy	Incremental ± 20 µm
Pole pitch	2+2
Resolution	Programmable
Protection	IP67 / IP43



SERIE MSA	SSI
Accuracy	Absolute ± 15 µm
Pole pitch	2+2
Resolution	10 µm
Protection	IP67

(*) Other resolutions available, upon request.



BARCELONA
 C/ Sant Francesc s/n - Pl. Cal Batlle
 17400 Breda (Girona) Spain

FRANKFURT
 Hainstraße 50
 63526 Erlensee, Deutschland

Tel. (00 34) 972 160 017
 info@encoderhohner.com
 www.encoderhohner.com

With more than 35 years of experience, HOHNER AUTOMÁTICOS, the sole spanish optical encoders manufacturer, from its headquarter based in Breda (Girona province), designs, manufactures, commercialize and supports its customers in the development of industrial automation projects.

Our own departments of optical, mechanical and electronic manufacturing allow us to offer to our customers free engineering services with maximum efficacy and fast delivery time.

It is our flexibility and adaptability, coupled with our ethos of engineering, manufacturing excellence and quality concern, which has placed HOHNER AUTOMÁTICOS at the forefront of the best encoders manufacturers in the world.



“ your **encoder** experts
 — since **1983**



your **encoder** experts

BARCELONA | www.encoderhohner.com | FRANKFURT

11/2019 © Hohner Automáticos

INCREMENTAL ENCODERS

SOLID SHAFT



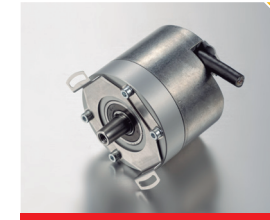
SERIE 10 / 10A

≤ 50.000 ppr
IP65 / IP67
Cable or connector
58 mm
6...12 mm



SERIE 58 / 58S

≤ 50.000 ppr / 2.048 ppr
IP65
Cable or connector
58 mm
6 mm



SERIE 64 / 64S

≤ 10.000 ppr / 2.048 ppr
IP54
Cable
58 mm
Conic 1:10



SERIE 30 / 30A

≤ 50.000 ppr
IP65 / IP67
Cable or connector
90 mm
12 mm



SERIE 10K INOX

≤ 50.000 ppr
IP69K
Cable
58 mm
10 mm



SERIE 10I INOX

≤ 50.000 ppr
IP67
Cable
58 mm
10 mm



SERIE 100 / 100 DUO

≤ 5.000 ppr
IP66
Cable or connector
115 mm
11 mm



SERIE 30I INOX

≤ 50.000 ppr
IP67
Cable
90 mm
12 mm



SERIE 66

≤ 10.000 ppr
IP64
Cable or connector
58 mm
Thread M8



SERIE 50

≤ 5.000 ppr
IP65
Cable or connector
50 mm
6...10 mm



SERIE 36

≤ 5.000 ppr
IP65
Cable or connector
36,5 mm
6 mm



SERIE 26 / 27

≤ 4.096 ppr
IP64
Cable
24 mm
4...6 mm



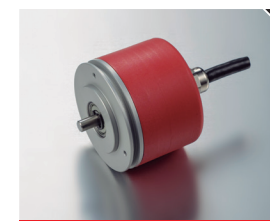
SERIE PR90

≤ 65.536 ppr
IP65
Cable or connector
58 mm
6...10 mm



SERIE 11

≤ 2.500 ppr
IP65
Cable
58 mm
10 mm



SERIE 20

≤ 1.024 ppr
IP54
Cable
58 mm
6 mm



SERIE 21

≤ 500 ppr
IP41
Cable
40 mm
6 mm

① RANGE OF TEMPERATURE -20°C...+85°C / OPTIONAL -40°C...+100°C POWER SUPPLY 5V / 11.30V / OPTIONAL 5.24V

INCREMENTAL ENCODERS

HOLLOW SHAFT



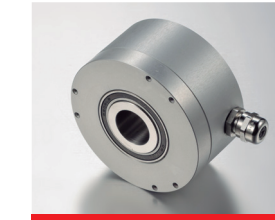
SERIE 59 / 59A / 59S

≤ 50.000 ppr / 2.048 ppr
IP65 / IP67
Cable or connector
58 mm
10...14 mm



SERIE 19 / 19A

≤ 50.000 ppr
IP65 / IP67
Cable or connector
58 mm
6...15 mm



SERIE 77

≤ 5.000 ppr
IP65
Cable or connector
77 mm
15...25 mm



SERIE 80

≤ 5.000 ppr
IP65
Cable or connector
100 mm
30...42 mm



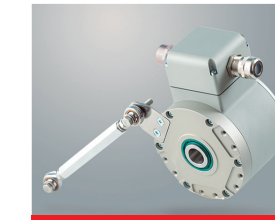
SERIE 50HI INOX

≤ 5.000 ppr
IP67
Cable
55 mm
6 mm



SERIE 19K

≤ 50.000 ppr
IP69K
Cable
58 mm
6...15 mm



SERIE 100H / 100H DUO

≤ 5.000 ppr
IP66
Cable or connector
100 mm
12...17 mm



SERIE 130M

≤ 2.048 ppr
IP68
Connector
134 mm
16...36 mm



SERIE PR90H

≤ 65.536 ppr
IP65
Cable or connector
58 mm
10...14 mm



SERIE 50H

≤ 50.000 ppr
IP65
Cable or connector
50 mm
6...12 mm



SERIE 22 / 22H

≤ 5.000 ppr
IP64 / IP50
Cable or connector
36,5 mm
6...8 mm



SERIE 28

≤ 4.096 ppr
IP64
Cable
24 mm
4...8 mm



SERIE MIE

1 ppr
IP67
Cable
54 mm
15 mm



SERIE MR

1 ppr
IP67
Cable
105...160 mm
11...19 mm



SERIE 22M

≤ 512 ppr
IP65
Cable
36.5 mm
10...12 mm

ABSOLUTE ENCODERS

SINGLETURN & MULTITURN



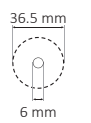
SSI ABSOLUTE ENCODERS

- > Singleturn resolution up to 21 bits
- > Multiturn resolution up to 38 bits
- > Solid, blind hollow or hollow shaft
- > Binary, Gray codes. Configurable via cable or switch
- > Up to IP67. Cable or connector output



SERIE E36 CS / CM SSI

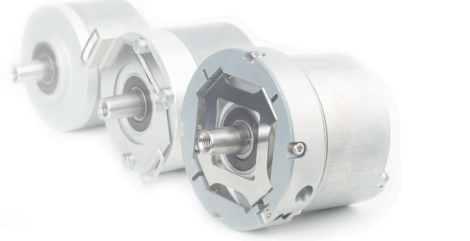
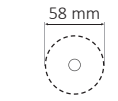
Singleturn ≤ 14 bits
Multiturn ≤ 24 bits
IP64
Cable



ABSOLUTE + INCREMENTAL ENCODERS

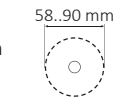


- > Singleturn resolution up to 19 bits
- > Incremental resolution 2.048 SIN/COS
- > BISS-C or SSI + SIN/COS or SIN/COS + SIN/COS
- > Solid, conical, blind hollow or hollow shaft
- > Up to IP65. Cable or connector output



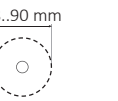
ANALOG ABSOLUTE ENCODERS

- > Analogical output 4...20mA, 0...20mA or 0...10V
- > Singleturn or multiturn, 10 or 12 bits resolution
- > Solid, blind hollow or hollow shaft
- > Cable configurable direction
- > Up to IP67. Cable or connector output



PARALLEL ABSOLUTE ENCODERS

- > Singleturn or multiturn
- > Solid or hollow shaft
- > Configurable: reset or direction
- > Up to IP67. Cable or connector output



ABSOLUTE ENCODERS FIELDBUS

- > Hohner Automáticos is offering all the Fieldbus encoders, Profibus, Profinet, Devicenet, CanOpen, CANlift, EtherCAT, EtherNet/IP, Interbus, Modbus/TCP, TCP/IP, Powerlink



ACCESSORIES

- > Flexible couplings
- > Coupling flanges
- > Mounting bells
- > Connectors
- > Measuring wheels
- > Antirotation systems
- > Pre-assembled cables
- > Support angles

