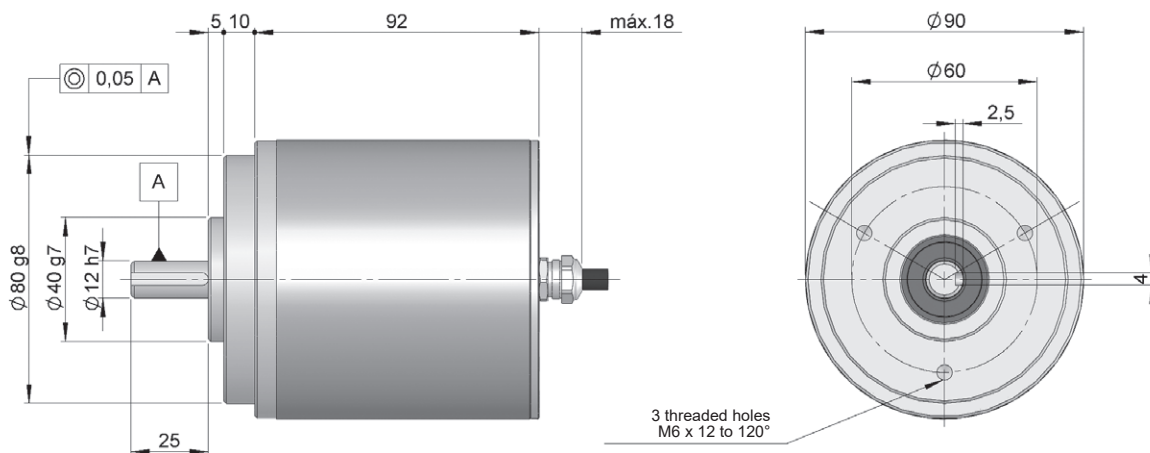
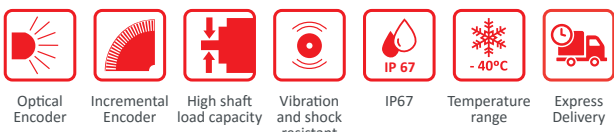




SERIE 30 IP67 INOX

HIGH RESOLUTION INCREMENTAL SOLID SHAFT ENCODER FOR HEAVY DUTY INDUSTRIAL APPLICATIONS

- Resolution up to 50.000 pulses per turn
- External diameter 90 mm
- Shaft \varnothing 12 mm
- Protection class IP67 according to DIN EN 60529
- Executions mechanical, electronic and special optics forms available on request
- Connection by cable (other cable length available)



Drawing Encoder S30 IP67, connection type 0

REFERENCE Reference example : 30I-4200-1024

Serie	Output signals	Connection	Power Supply / Electronic output	Pulses number	Special customer
30I -	<input type="checkbox"/> <input type="checkbox"/>	<input type="checkbox"/>	<input type="checkbox"/> -	<input type="checkbox"/> <input type="checkbox"/> <input type="checkbox"/> <input type="checkbox"/> <input type="checkbox"/> <input type="checkbox"/>	<input type="checkbox"/> <input type="checkbox"/> <input type="checkbox"/> <input type="checkbox"/>
30I. Stainless Steel	30. A 40. A+B 42. A+B+0 43. A+B+0̃ 35. Ã+B̃ 36. Ã+B̃+0̃	0. Axial cable	0. 11...30VDC / NPN Open collector 11...30VDC 6. 11...30VDC / RS422 5VDC (compatible TTL) 7. 5VDC / RS422 5VDC (compatible TTL) 9. 11...30VDC / Line driver differential Push-Pull 11...30VDC	(*)	FT00. -40°C

Order your reference Step file 3D

info@encoderhohner.com
service available in 24 h

(*) 10.000 to 50.000 pulses with interpolation. Available 10.000 direct optical pulses without interpolating upon request.



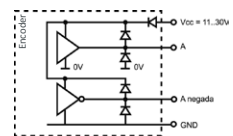
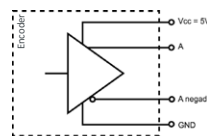
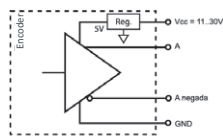
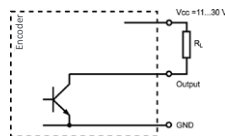
SERIE 30 IP67 INOX

HIGH RESOLUTION INCREMENTAL SOLID SHAFT ENCODER FOR HEAVY DUTY INDUSTRIAL APPLICATIONS

MECHANICAL SPECIFICATIONS

Materials	Cover: Stainless Steel AISI304 Housing: Stainless Steel AISI304 Shaft: Stainless Steel AISI304
Bearings	Ballraces
Bearings lifetime	1x10 ¹⁰ rev.
Maximum number of revolutions permitted mechanically	6000 rpm
Protection against dust and splashes according to DIN EN 60529	IP67
Rotor inertia moment	270 gcm ²
Starting torque at 20°C (68°F)	≤ 0,05 Nm
Maximum load permitted on axial shaft	80 N
Maximum load permitted on radial shaft	100 N
Weight aprox.	1,2 Kg
Operating temperature range	-20°C to +80°C - Standard -40°C to +80°C - Special Customer FT00
Vibration according to DIN EN 60068-2-6	100 m/s ² (10Hz...2000Hz)
Shock according to DIN EN 60068-2-27	1000 m/s ² (6ms)
Maximum pulses per turn	50.000
Axial connection	2 meters cable (other cable lengths available or connector mounted at the end of the cable, upon request)

OUTPUT SIGNALS





OUTPUT CIRCUIT	NPN Open Collector	RS422 (TTL compatible)	RS422 (TTL compatible)	Push-Pull Differential
Reference code	0	6	7	9
Power supply	11...30 VDC	11...30 VDC	5 VDC ±5%	11...30 VDC
Output voltage	11...30 VDC	5 VDC	5 VDC	11...30 VDC
Consumption	40 mA	Typical: 80 mA Max: 160 mA	Typical: 70 mA Max: 150 mA	Typical: 45 mA Max: 150 mA
Max. load capability / channel	40 mA	±20 mA	±20 mA	±30 mA
Length of cable allowed	50 m (24 VDC)	1200 m	1200 m	100 m
"Low" signal level	VOL < 0.4 VDC (24 VDC)	VOL < 0.5 VDC	VOL < 0.5 VDC	VOL < 2.5 VDC
"High" signal level	VOH > 22 VDC (24 VDC)	VOH > 2.5 VDC	VOH > 2.5 VDC	VOH > VCC - 3 VDC
Frequency	100 kHz	300 kHz	300 kHz	200 kHz
Short circuit protection	Not permanent	Yes	Yes	Yes
Protection polarity inversion	Yes	Yes	No	Yes

Channel B leads (90° electric) channel A, view from the shaft, shaft rotating clockwise

SERIE 30 IP67 INOX

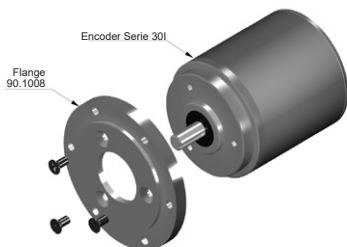
HIGH RESOLUTION INCREMENTAL SOLID SHAFT ENCODER FOR HEAVY DUTY INDUSTRIAL APPLICATIONS

CONNECTION

	 95.0008002 Cable 2x2x0,14+1x0,14	 95.0008003 (* Cable 3x2x0,14+2x0,34
GND	Yellow	Black
VCC	White	Red
A	Brown	Yellow
B	Green	Green
\tilde{A}		Brown
\tilde{B}		Blue
0 (reference)	Grey	Grey
$\tilde{0}$	Grey	Orange

(* Cable 3x2x0,14+2x0,34 only for encoders with inverted signals.

ACCESSORIES EXAMPLES



All the accessories available in the section "MOUNTING ACCESSORIES".